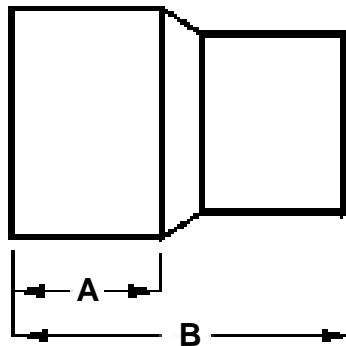




IPS Molded End Caps 3/4” - 8”

Pressure Rated for DR Listed
(Dimensions in Inches)

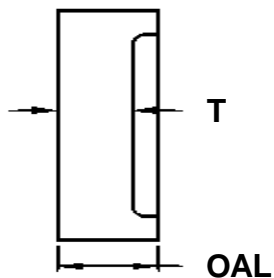


IPS Nominal Size	A	B (OAL)	DR	Weight (lbs)
3/4"	-	2.04	11	0.5
1"	-	2.09	11	0.5
1-1/4"	-	3.25	11	0.5
1-1/2"	-	2.58	11	0.5
2"	3.12	7.00	11	1
3"	2.87	7.43	11	1
4"	3.00	7.75	11	2
6"	4.22	10.25	11	4
8"	5.14	12.41	11	7

• See Next Page For Larger End Caps 10” - 54” •

Other sizes and DR's not listed are available - Call For Quick Quote

Molded fittings meet AWWA C901/C906 fitting requirements.



IPS Machined End Caps 10” - 54”

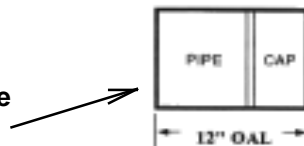
Pressure Rated for DR Listed
(Dimensions in Inches)

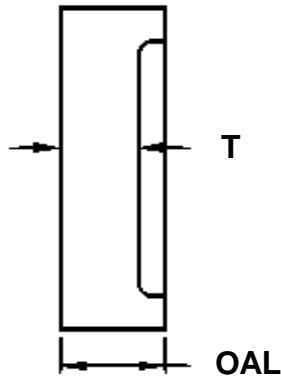
IPS Nominal Size	T (min)	OAL	DR	Weight (lbs)
10"	2.62	4.00	11-32.5	15
12"	3.00	4.00	11-32.5	17
14"	3.00	4.00	11-32.5	19
16"	3.38 2.87	5.00 4.00	11 17-32.5	32 24
18"	3.80 3.22	5.00 4.00	11 17-32.5	41 30
20"	4.20 3.00	5.00 4.00	11 - 17 21 -32.5	50 37
22"	4.65 3.70	6.00 5.00	11 17-32.5	75 45
24"	5.06 4.00	6.00 5.00	11 17-32.5	89 68
26"	3.00	4.00	10 PSI Only	62
28"	3.00	4.00	10 PSI Only	72
30"	3.00	4.00	10 PSI Only	83
32"	3.00	4.00	10 PSI Only	94
34"	3.00	4.00	10 PSI Only	106
36"	3.00	4.00	10 PSI Only	115
40"	3.00	4.00	10 PSI Only	142
42"	3.00	4.00	10 PSI Only	157
48"	3.00	4.00	10 PSI Only	205
54"	3.00	4.00	10 PSI Only	253

Other sizes, pressure ratings, and DR's not listed are available - Call For Quick Quote

Sizes 24" and smaller meet AWWA C906 fitting requirements, sizes 26" and larger are quoted per fitting.

Field fusion of machined end caps may require the use of a stub end holder. Sufficient length of pipe may be fused to end cap to eliminate the use of a stub end holder. Call for a Quick Quote on this fabricated option.





DIPS Machined End Caps

Pressure Rated for DR Listed

(Dimensions in Inches)

DIPS Nominal Size	T (min)	OAL	DR	Weight (lbs)
4"	1.00	3.00	11-32.5	2
6"	1.50	3.00	11-32.5	4
8"	2.00	3.00	11-32.5	6
10"	2.40	4.00	11-32.5	12
12"	2.80	4.00	11-32.5	18
14"	3.30	5.00	11-32.5	30
16"	3.68	5.00	11-32.5	38
18"	4.12	5.00	11-32.5	48
20"	4.60 3.70	6.00 5.00	11-13.5 15.5-32.5	98 70
24"	5.07 4.38	6.00 5.00	11-15.5 17-32.5	114 94

Other sizes, pressure ratings, and DR's not listed are available - Call For Quick Quote

Sizes 24" and smaller meet AWWA C906 fitting requirements, sizes 26" and larger are quoted per fitting.

Field fusion of machined end caps may require the use of a stub end holder. Sufficient length of pipe may be fused to end cap to eliminate the use of a stub end holder. Call for a Quick Quote on this fabricated option.

